



## Life of Faith

JANUARY 2024

224 Benton St. (P.O. Box 418) Phone: 509 548 7010  
Email: [fcleavenworth@gmail.com](mailto:fcleavenworth@gmail.com) [www.fcleavenworth.com](http://www.fcleavenworth.com)  
Pastor Eva Jensen

Dear Faith Friends,

Faith Lutheran is taking a “leap of faith” and *moving forward* with our vision to provide affordable housing for our pastor now and in the future. As we launch a Capital Campaign I share these words:  
Come Together, See, Pray, Hope, Give Thanks

Even though my editor asked me to be brief, I of course can’t contain myself. There is so much more! I am overwhelmed and deeply touched by the number of you who signed up for the campaign teams. Now, we are people in motion and a summary of what happens next is going to be helpful.

Our vision for the campaign, briefly, is to secure a parsonage that will be affordable for our pastor now and for decades to come. We are working towards acquiring Margaret Neighbor’s home on Tumwater Drive. The inspection was favorable, the appraisal is complete and all for \$500. We have applied for a mortgage and have a plan for a bridge loan. When the mortgage is approved, we will bring the purchase of the Tumwater home before you for a buy/don’t buy congregational vote. The capital campaign will continue as agreed, independent of the vote results, to fulfill the need for securing a parsonage.

Our campaign coaches, Don and Cindy are proving to be capable leaders and have done the lion’s share of the work so far. We now have a draft of a brochure and key dates have been identified. Each of these are foundational building blocks for the next events in the campaign.

- January 7: Pr. Don Haven preaches, then we all meet after coffee to gather as various campaign teams to more deeply understand and refine what each of us are to do during the campaign. Team leaders will then help guide each team along the campaign trail.
- February 4 and 11: Campaign packets with information about the campaign will be distributed.
- February 10 and 11: Mission Rallies (you only need to attend one), where we learn more from our campaign coaches and congregation leaders about the vision, the plan, means of giving, reasons for giving, in a context of fun and mutual support.
- February 11: Pr. Don Haven will preside at the service with a preaching/teaching sermon.
- February 24: Saturday, the Sanctuary will be open during the day for prayer and reflection.
- February 25: Abundance Sunday. During worship we will have an opportunity to pledge our support for the Capital Campaign and following worship, we will gather to celebrate with a Festival of food, fun and fellowship.
- March 17: We gather during worship to offer thanks and dedicate our gifts to God’s work.

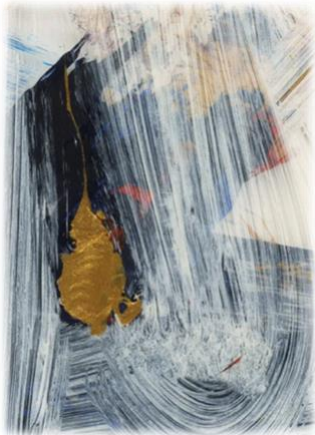
As we approach the time of Epiphany, we know that Christ’s light is leading the way forward on this journey of hope. We are motivated by our conviction that God is making all things new for our congregation and the community we serve.



One by one we are humble, together we are magnificent – we are “Faith Moving Forward!”

Karl Kranz, Council President

## From our pastor...



### Persistent Hope

We have been lighting candles throughout these days of Advent, turning to God in anticipation of new birth – new life. Now, in the closing days of this season, we light all four candles each day: Faith, Hope, Joy and Peace.

My sense of hope can be a bit unsteady on some days. Then I am thankful for the words of Paul in Romans, Chapter 8:24b - 25.

*Now hope that is seen is not hope. For who hopes for what is seen?  
But if we hope for what we do not see, we wait for it with patience.*

When present circumstances feel overwhelming, a sense of instability, even weakness, can move into my being. It is then that I keep learning how blessedly persistent God is renewing hope in me – true hope, real hope, hope that is something quite other than wishful thinking. Hope that keeps working in me, setting me in motion when I don't know how to move on my own.

This day, I share with you a poem from artist and writer, Pastor Jan Richardson, who often inspires and renews me with her words of wisdom. May this poem be a blessing to you this week as we anticipate Christ's new birth in our hearts, our lives, and the world.

Pastor Eva Jensen

### BLESSING OF HOPE

**So may we know the hope  
that is not just for someday  
but for this day—  
here, now, in this moment  
that opens to us:**

**hope not made of wishes  
but of substance,  
hope made of sinew and muscle and bone,  
hope that has breath and a beating heart,  
hope that will not keep quiet and be polite,**

**hope that knows how to holler when it is called for,  
hope that knows how to sing when there seems little cause,**

**hope that raises us from the dead—  
not someday, but this day,  
every day,  
again and again and again**



from [The Cure for Sorrow: A Book of Blessings for Times of Grief](#), Jan Richardson

Click here for a Christmas message from Bishop Elizabeth Eaten...<https://www.youtube.com/watch?v=yxN1j7IWJSQ>



**BOOK GROUP:** Each Tuesday from 9:00 – 10:00 a.m. in Fellowship Hall. Please contact Margaret Neighbors, [mneighb67@gmail.com](mailto:mneighb67@gmail.com) if you have questions. All are welcome.

**SAIL** (Staying Active and Independent for Life) Tuesday and Thursdays, from 10:30 – 11:30 a.m., Fellowship Hall. All seniors 65 and older are welcome to join this free program. Contact Connie Thomassen (509) 470-8212 for more information.

**KNITTING AND CRAFTS:** January 10 and 24, 1:30 – 3:00, Fellowship Hall

**QUILT TYING:** Each Tuesday from 2:00 – 3:00 p.m., Fellowship Hall

**ENGAGING CAMPAIGN TEAMS:** January 7 after coffee hour. Those committed to campaign teams and those who have potential interest will meet to imagine the work they are called to do.

**CHURCH COUNCIL:** January 18, 6:30 p.m. with zoom capability

**ANNUAL MEETING:** January 28, potluck gathering after worship

**IMITRATION/RACE AND JUSTICE GROUP:** January 17, 6:00 p.m. (note time change)

## Mara, Adam and Ellen are back!

Mara, Adam and Ellen recently returned from a trip to Ecuador and Bolivia for Mara's sabbatical. Ellen studied Spanish in Quito, while Mara volunteered at a nursing home. Once Adam joined them, they all did some trekking together, visited their two au pairs (Seiko and Nayhit) in Bolivia, and ended their journey with time together in the Galapagos Islands. They enjoyed their travels but are happy also to return to winter and the Christmas season in Leavenworth.



## CHURCH COUNCIL December 2023

### Pastors Report:

- On November 19, 3 people committed to full membership at Faith. This gives them voice in formal matters related to the ELCA and other legal needs. Another day of commitment is planned early 2024.
- Together with the Worship Committee, Sunday Advent worship and mid-week soup suppers and vespers have been planned.
- Pr. Eva met with a committee formed to support a new Leavenworth event celebrating 3 King's Day on Epiphany, January 6. This is a significant cultural and Faith day for our Latinx community.
- She worked with Pr. Barbara Rossing to bring a pertinent video for viewing at Faith, a conversation with a Pastor in Gaza about the Israel-Hamas conflict and its human cost.
- Pr. Eva will be off Dec. 26 – Jan. 5 and attend a Continuing Education event Jan. 6-10.



### Treasurer's Report:

- The first of our high interest 7 month CD is coming due at the end of December. There was discussion about the best placement for these funds as we enter a financially exciting new year and anticipate the possibility of needing these funds in March to complete purchase of a parsonage.
- Giving was \$2000 above budget in November though we are still \$24,000 below budgeted income for the year. Our expenses have been under budget as well.
- It was decided to again support the Methodist church's School Backpack program, which allows students to pick up a backpack containing food items on Fridays to supply good food through the weekend for food-stressed households. Our Benevolences are now up to date.
- Both Faith's Quickbooks and Tithely giving accounts have been reconfigured to allow tracking of gifts directed to the Capital funds campaign. People giving electronically through Tithely can select the 'Property Fund' option for a Capital Campaign contribution.
- We have signed a contract with Don Haven and Cindy Carroll's company *Abundant Congregations* to guide the Capital Fund Campaign and have made our first payment.

### Property Committee:

- Our renter and neighbor Kirk kindly used his snowblower to dig Faith out these last 2 snow storms. Our prior arrangement with Luis Fonseca for snow removal has been re-established now. He will remove snow of 4 inches or more. There is a snow removal sign-up sheet in the Fellowship Hall as cleanup is always needed.
- We may need to have special plowing behind the church to allow parking for Christmas services as we anticipate that street parking will be limited.
- We have administered a short term fix for the Fellowship Hall plumbing problem. An outdoor clean out pipe was installed which should get us through the winter. In the Spring we anticipate replacement of the sewer connector pipe from the crawlspace across the lawn to at least the horizontal east-west paved walk. The original Orangeburg pipe is failing. At that time, we will be able to assess the condition of the pipe running under the sidewalks to the city sewer line. We hope that segment is in better condition. The cost could range from \$7,000 to \$40,000.
- The sump pump and water heater replacement projects remain on the 'do when able' list. No impending failure noted.

(continued on next page)

**Worship Committee:**

- Worship committee will use familiar liturgies through Epiphany and added a candle lighting litany for Advent. Christmas services have been scheduled.

**Parsonage Project Committee:**

- We have signed the contract with Don and Cindy for campaign management. There was good turnout for the initial meeting.
- The home inspection results from the Tumwater house were reviewed. There are no deal breaking findings. Some paint wear and minor issues were identified.
- We have submitted an application to the ELCA Mission Investment Fund for a mortgage and expect a response after the Holidays

**Old Business**

- Email to nwi.net is working as long as general mailings are sent out through Deanne. All families on the mailing list are now receiving the newsletter.
- Faith Membership Classes have concluded and 3 new members have been welcomed.
- The outdoor Adirondack chairs are stacked and tarped for the winter

**New Business**

- We hope we can hold the final vote on purchasing the Tumwater house as a Parsonage at the Annual Meeting on January 28. This will be dependent on mortgage application approval.
- The Council reviewed the Faith Constitutional guidelines for the Mutual Ministry Committee and elected to form that Committee at a later date. Letter of thanks to be sent to the members that volunteered to serve on the initial Committee.
- Pastor Nancy Gradwohl's injury is not as severe as feared but did refracture the same leg. The repair at Harborview went well and she is recovering at her son's home now.
- Lisa Therrell has applied for a grant to help support our Free pantry, requesting between \$500 and \$750 to support this ministry.
- There was discussion about the upcoming Council elections. Greg Steeber and Eric Krumland have reached their term limits and may not stand for reelection. Jan Monroe, Greg Harris, and Roselyn Francis need to be reelected if willing.
- Next Meeting: January 18 at 6:30, Fellowship Hall with Zoom availability



**From the nominating committee.....**

We are looking to fill positions on the council. Would you or anyone you know like to be considered? Please forward names to John Schramm at [johnmaryschramm@gmail.com](mailto:johnmaryschramm@gmail.com)

The Council oversees the ministries of the congregation and is integral to the leadership of our faith community. The council meets monthly under the leadership of Karl Kranz, president. Thank you for faithfully considering this opportunity as our community moves into the future.

--your Nominating committee: John Schramm, Margaret Neighbors, Barbara Rossing

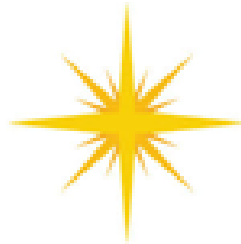
## Bulletin Board Photo Directory



This is a picture of the beginning of our photo directory in the Fellowship Hall. Thank you to those who have already forwarded pictures! We want to be able to learn names and faces of people in our community.

Please consider forwarding a photo (up to 4x6) with your name to include on the bulletin board. If you have a print, please send to FLC, PO Box 418, Leavenworth, WA or simply bring to worship and pin it on the bulletin board. If you have a digital photo, please send to Dawn Kranz at [Dawn@nwi.net](mailto:Dawn@nwi.net)

If you have neither of these, no problem! Ask Dawn to take your picture.



## MEAL TRAIN TO SUPPORT NORMA AND GUSTAVO

Many of you know Norma and Gustavo. They live in our community and have attended Faith Lutheran. Gustavo was rushed to Harbor View in Seattle on September 17 after suffering a stroke. He was admitted to the Intensive Care Unit where he underwent surgery and consequently started rehabilitation therapies to regain movement and speech impacted by this event. On October 26 he was discharged back home to Leavenworth where he continues speech, occupational and physical therapies at Cascade Medical Center. Gustavo is young, in good health and determined. His continued progress towards good health is a difficult and long journey but this man shows us all how the power of positivity which can help overcome the most difficult of situations.



Faith member, Christine Morgan, has invited us to sign up to provide a Sunday meal for Gustavo and Norma as they adjust to their changing and busy lives since Gustavo's stroke. Please help as you are able by signing up in the calendar below to deliver a meal. The link provides more specific information about food needs, delivery opportunities, etc. Thank you. <https://mealtrain.com/odg1ln>



## **FAITH'S CAPITAL CAMPAIGN TEAM OPPORTUNITIES AVAILABLE!**

Faith Lutheran's recent decision to proceed with a Capital Campaign to raise funds for a new parsonage and other key goals is now in gear. There was great excitement and enthusiasm expressed at the initial orientation meeting on December 10 as

people gathered around tables to learn about the Campaign Teams and how they could get involved. Now's the time to get engaged in the spirit of Faith Moving Forward!

The next opportunity to learn more and meet with the Teams is after worship on January 7. You are invited to prayerfully consider what Capital Campaign Team might be the one you would like to join!!

*Getting involved on a Campaign Team means you can share your talents, reconnect with people, stay updated with the campaign process and become an integral part of the "Faith Moving Forward" capital campaign.*

See Team descriptions below. For more information, contact Karl Kranz, Campaign Chair, at [kdk@nwi.net](mailto:kdk@nwi.net) or (509) 433-8653.

### **CAMPAIGN COMMUNICATION TEAM**

This Team will develop and manage the communication of the vision of the Campaign in compelling, inspirational and consistent ways. They will also invite people to share their stories about being a part of Faith's vision and mission and find ways to creatively communicate Faith Moving Forward in multiple ways such as: the newsletter, bulletin, verbal announcements, congregation's website and social media.

### **HOSPITALITY AND SPECIAL EVENTS TEAM**

Several of the campaign events are designed to inspire and increase awareness around the vision of the capital campaign. These include: *2 Mission Rallies on February 10 & 11 and a Festival following Abundance Sunday Worship on February 25.* The Hospitality and Special Events Team will be responsible for planning and hosting these events by providing décor and food.

### **SPIRITUAL LIFE AND GROWTH/WORSHIP TEAM**

This Team will create an atmosphere of spiritual growth and renewal during the campaign to help people engage in giving as a spiritual exercise in order to deepen their understanding and trust of God's abundance while growing in their own generosity. They will encourage a spirit of abundance and support the campaign effort through prayer opportunities, devotion writing and bible studies that uplift generosity.

*(continued next page)*

(from previous page)

### ADMINISTRATIVE SUPPORT TEAM

Administrative support consists of staff and volunteers who will provide administrative support to the Campaign process. This team will be responsible for coordinating and distributing all informational materials.

### INVITATION TEAM

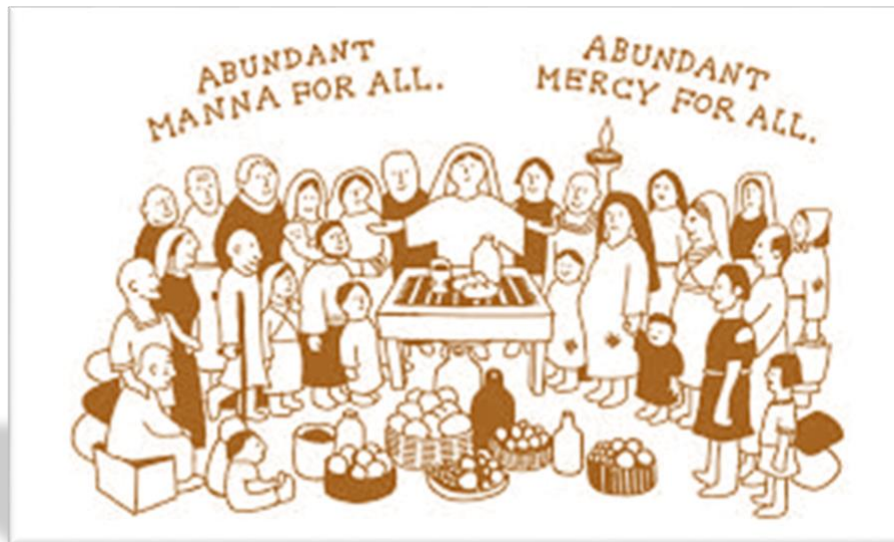
This team will make invitational phone calls to the congregation during the campaign. These calls will not involve asking for a financial response. Their purpose is to invite people to special events or worship experiences which are designed to unify and inspire the congregation as well as to celebrate its mission and ministry story. They will be trained and will be given “talking points” about the campaign in order to answer basic questions during these calls. This team will consist of enough callers such that each caller makes calls to approximately 8-10 (or fewer) households for each event.

### LEAD GIFT TEAM

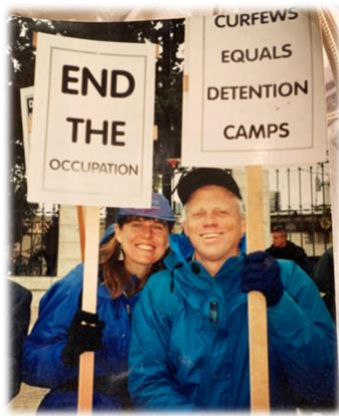
The Lead Gift portion of the campaign includes identifying and contacting a selected group of households in the congregation, inviting them to share a lead gift for the campaign.



*The Faith Moving Forward capital campaign is designed to inspire the joy of giving by trusting in God's abundant grace and striving to live God's love in the world!*







## “This Land is Mine” by Lauren Johnson

I grew up when cheering for the Jews in Israel was absolutely normal. The movies *The Ten Commandments* and *Exodus* won Academy awards and were big winners at the Box Office. The [theme from Exodus](#) thrilled me. Andy Williams' [This Land Is Mine](#) told us God gave the land to the Jews, that they were finally home and would fight to the death for their land. Our family always read Bible stories after supper. I even remember going to a speech by a Palestinian as an 18 year old college student. All I could hear was “Arab. Not a Christian.”

Fast forward four decades. Barb and I had just left a wonderful visit with Mitri Raheb on a rainy, cold December day in Bethlehem. It only took a few steps before we realized we were in trouble. The lockdown could be re-imposed any moment. There were only a few locals doing what we were doing – running in terror. We managed to flag a cab and get a ride to the 20 foot berm the Israeli army put up to block traffic flow into Bethlehem.

Fast forward two more decades and we are witnessing the horror of an actual genocide approved by our government and many academic, civic, corporate and religious institutions. Thank goodness for our Presiding Bishop, Elizabeth Eaton, who wrote “We must also call a thing a thing. The power exerted against all Palestinian people — through the occupation, the expansion of settlements and the escalating violence — must be called out as a root cause of what we are witnessing. We are committed to our long-standing accompaniment of the Evangelical Lutheran Church in Jordan and the Holy Land. The God who liberates us calls us to be a liberating witness. May it be so.”

On the other hand, the [Likud Party platform](#) calls for the expansion of settlements as the redemption of the land, presumably from its being bespoiled by Arab habitation. “Settlement, both urban and rural, in all parts of the Land of Israel is the focal point of the Zionist effort to redeem the country, to maintain vital security areas and serves as a reservoir of strength and inspiration for the renewal of the pioneering spirit.”

In the spirit of calling a thing a thing, I have relied on a number of Jewish voices who are critical of the practices of the modern state of Israel. (Actually I would prefer current Palestinian voices from Gaza and the West Bank, but these persons would be rather quickly swept up and disappear if they speak too loudly.) Remember we have been subjected to decades of propaganda which has filled our consciousness with “knowledge” easily remembered. It takes a lot of work and spiritual courage to walk away from that world.

- Best first video interview by Blumenthal: [https://www.youtube.com/watch?v=ps6uQWZWR\\_E](https://www.youtube.com/watch?v=ps6uQWZWR_E)
- Max Blumenthal: Probably the best news and perspectives on what is going on in Gaza. <https://twitter.com/MaxBlumenthal> <https://www.youtube.com/@mblumenthal> <https://thegrayzone.com/author/max-blumenthal/>
- Aaron Maté: [The Grezone \(Better Audio\) Norman Finkelstein on Gaza, with Aaron Mate - LIVE AT AVE C](#)
- Ilan Pappé : [Understanding The Myths And Realities Of Israel | Ilan Pappé | TMR](#)
- And finally, we have the most anti-Israel Jews of all: the Satmar Hasadim: by all means, watch this video: [Satmar Kiryas Joel Hadlukah - Lag Baomer 2023 | ל"ג בעומר תשפ"ג - סאטמאר קרית יואל הדלקה](#)
- Benny Morris, [Righteous Victims: A History of the Zionist-Arab Conflict, 1881-2001](#) Excellent introduction!



## Immigration/Race Justice Group (I/RJG) *December 2023*

- The Director of Cascade School District's AVID program (Advancement Via Individual Determination) was in attendance at our meeting. AVID is an educational program intended to enhance college preparedness in all class levels. She indicated the program's significant expansion this year into more class levels. Members of our group have helped as tutors and mentors over the past years. Volunteers will again be needed in February '24 to help participants with developing scholarship application essays.
- **Finances:** We are encouraged that we will be receiving some much needed donations from friends and members. A grant application was submitted to the Advent Lutheran (Spokane) Endowment Fund which has helped us several times in the past.
- **Citizenship/Literacy Classes:** Currently we have 2 citizenship students and approximately a dozen participants with 3 volunteers for Literacy classes, both weekly at the Peshastin Library.
- The Venezuelan nursing student seeking asylum received her \$900 assistance (\$600 from supporters and \$300 from I/RJG) and is working towards finishing her course work in January to be able to graduate.
- After much discussion regarding the questions the I/RJG had for the Cascade H.S. Special Migrant Graduation Program and the needs of their students for driver's education courses, it was decided to extend \$1,500 to those 5 students whose training begins in February. Funds were received to cover those expenses thanks to generous supporters. Regarding future needs, the group decided to evaluate each request on its own merits. A "teaching" grant application form for students was developed which will help our group make decisions.
- A former member gave the group a written request for a vision impaired student living at Portland's School for the Blind boarding school. She met this student and her mother at a workshop she facilitated there. The group will provide that family with \$600 after we are given the necessary contact information.
- Dia de Los Reyes Magos (Day of the Wise Men, Epiphany, Jan. 6) will be a community event at the Wenatchee River Institute (WRI). Several I/RJG members have attended meetings facilitated by the Icicle Creek Foundation and Wenatchee River Institute to sponsor an Epiphany gathering at WRI. The purpose of this event will be to provide the Hispanic community a venue to celebrate this important cultural observance. The event will include food, a program and snowshoeing. Several I/RJG folks will be involved. We will donate \$100 to the event.
- The Director of Wenatchee's NW Immigrant Rights Project (NWIRP) will attend one of our meetings in January or February.
- Interfaith Justice Coalition: Members are encouraged to attend their meeting Sunday, January 7, 1:30 – 4:00 p.m. at Cascade Unitarian Universalist Fellowship, 1550 Sunset Hwy, E. Wenatchee.
- Next meeting: Wednesday, January 17, 6 :00 p.m. (NOTE time change)

+++++

Thanks to all who contributed articles and general interest information for this newsletter! Please forward contributions to Mary Steeber at [mary.steeber@gmail.com](mailto:mary.steeber@gmail.com) by January 22, for the February issue.

